

Pneumatic Shock Wave Therapy System



HMS PST - 5000s Pneumatic shock wave therapy system is one of the most compact high energy shockwave system with all accessories. Powerful mechanical energy generator with high precision which provides for efficient and compact design Intelligent touchscreen programs for both experienced operators or new to this technology. Direct access to all necessary parameters of application, including a list of indications with vivid guidelines and rich user customized programs. Preset treatment protocols for the major treatments with photos and detailed indication to guide users including photos on various treatment areas. Customer management tool can show total dosage applied client body and store customer personal information friendly.

APPLICATIONS

- Shoulder injuries
- Chronic achilles tendonitis
- Plantar fasciitis
- Elbow tendinopathies
- Pain syndrome
- Fracture healing
- Lymphatic system stimulation
- Ed erectile dysfunction
- Body shaping

SPECIFICATIONS

Controls	- Touch screen and encoder
Display	- 8" Touch screen display
Energy	- 0.5 Bar - 8Bar (0.5 Bar Step)
Frequency	- 0.5 Hz - 22Hz (Depends on pressure)
Burst ON	- 02 - 10 Pulse (1 pulse step)
Burst OFF	- 00 - 10 pulse (1 pulse step)
Handpiece Generator	- Compressed Air
No. of Shocks	- 100 - 9999 (Per Treatment)
Lifespan of Bullet	- Over 2 Million shots / Bullet

FEATURES

- Multi-language Operating System
- Painless treatment
- No downtime after treatment
- Easy to operate
- Non-invasive treatment
- Hand-Piece detection
- Easy to track treatment history
- Continuous & Burst mode
- Long lifespan Hand-Piece
- 12# Body navigation program
- 14# Treatment Indication list
- 30 User-Memory
- 5 Standard Applicators + 4 Optional

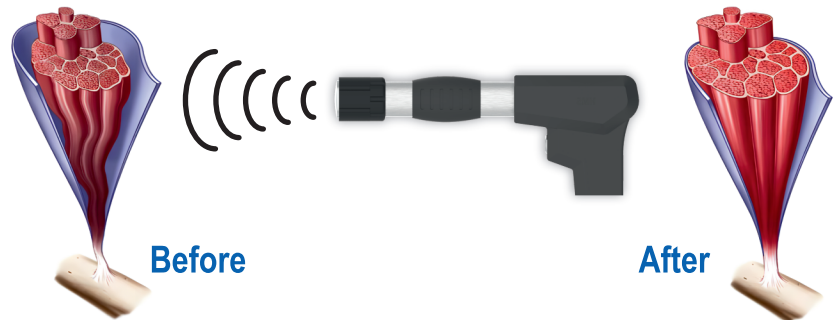
Shockwave or called Acoustic Wave Therapy uses the body's intrinsic repair mechanisms to tighten the tissue. The application of acoustic waves results in transient cellular membrane permeability. The exchange of substances between cells is thus improved. The treatment increases blood flow (hyperemization) in all tissue layers including the connective tissue, through vasodilation and vascularization. The objective of shockwave is to induce tightening neoformation of connective tissue to reduce cellulite and improve the appearance of the affected skin



ANALGESIC EFFECT ELIMINATION OF PAIN

DECREASE OF MUSCLE TENSION, INHIBITION OF SPASMS

Hyperaemia is one of the basic effects of Shockwave therapy in the body. It provides better energy supply to hypertonic muscles and their ligamentous structures. Furthermore, it causes lessening of pathological interactions between actin and myosin. This leads to significant reduction of muscle tension.

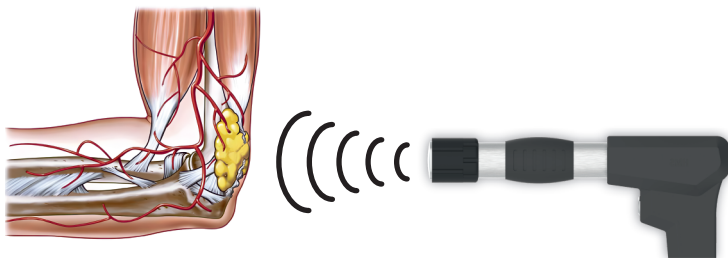


Before

After

ENHANCED DISPERSION OF SUBSTANCE P

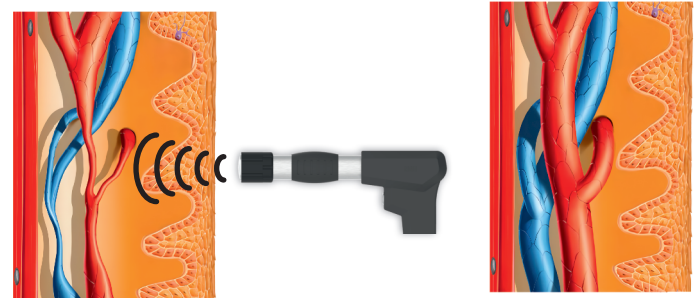
The activity of Substance P (a pain mediator and growth factor) leads to stimulation of afferent nociceptive fibres. It also supports development of oedema and supports secretion of histamine. Reduction of substance P concentration reduces pain in the affected area and decreases the development of oedema.



ACCELERATION OF HEALING

IMPROVED METABOLISM & MICROCIRCULATION

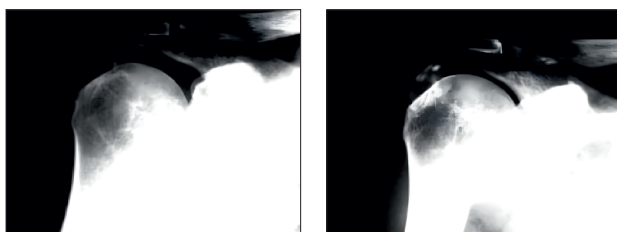
The Shockwave therapy accelerates removal of nociceptive metabolites, increases oxygenation and supplies damaged tissue with source of energy. It supports removal of histamine, lactic acid and other irritating agents.



Before

After

MOBILITY RESTORATION



Before

After

DISSOLUTION OF CALCIFIED FIBROBLASTS

The Shockwave therapy dissolves calcified fibroblasts and starts subsequent biochemical decalcification of primary calcaria or secondary symptoms of arthrosis.